

# UPS

## Evolution 650/850/1150/1550/2000 VA

## Evolution S 1250/1750/2500/3000 VA

High density protection for network devices

### Maximum availability

- ▶ Powershare. The Evolution output sockets are individually controlled to provide load-shedding to maximise the backup time and provide remote reboot and sequential start-up as standard.
- ▶ Continuous power supply. Hot swappable batteries. The HotSwap MBP (Maintenance By-Pass) module allows the UPS to be replaced without interrupting the power supply.



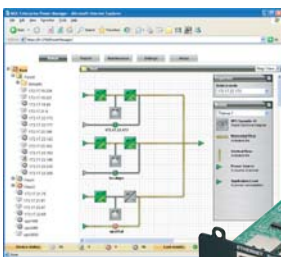
HotSwap MBP 4DIN

- ▶ Long backup times. 1 to 4 EXB battery units can be added to the Evolution S (from 1250 to 3000VA).

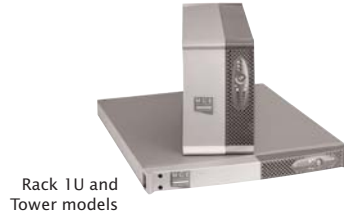


### Minimum total cost of ownership

- ▶ Line-interactive HF technology: the best price/performance ratio.
- ▶ No additional cost: rack 1U and RT models are provided with the rail kits.
- ▶ Remote supervision. A wide range of options using the Solution-Pac supplied: SNMP and HTML and relay outputs.



Network Management Card and MGE EPM Supervisor.



Rack 1U and Tower models



RT models

### Flexibility

Evolution has unmatched Flexibility.

- ▶ Format. Evolution is available in tower format, rack 1U format, RT2U convertible rack/tower version (optimised for rack mounting) or RT3U (for tower or short-depth racks).
- ▶ Connections. With FlexPDU and HotSwap MBP the Evolution can be connected by sockets or terminal blocks. They can be installed as required behind, on the side or on top of the unit.
- ▶ Compatible with high power factor loads. The Evolution S are rated for 0.9 total power factor (1250 VA/1150 W, 1750 VA/1600 W, 2500 VA/2250 W and 3000 VA/2700 W)
- ▶ Interfaces. USB + serial + remote start/stop + slot for optional communications card.

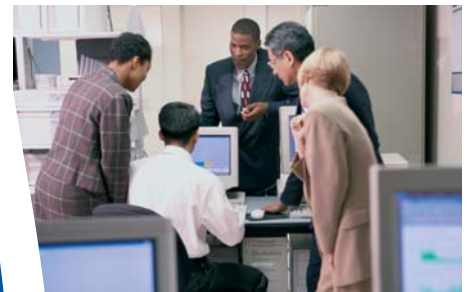


Protection for 1 to 15 servers, ideal for:

- ▶ network devices
- ▶ rack-mounted servers
- ▶ conventional rack-mounted or tower servers
- ▶ network storage systems



With its extremely compact size, the Evolution is the ideal solution for making the best use of the available space.



Thanks to its many installation options, the Evolution is easily integrated into any environment: offices, point-of-sale terminals, 19" racks, etc.

# M G E

Office Protection Systems



Evolution 1550

- 1 Full user interface:
  - ON/OFF button for UPS and outlets
  - Load protected/ not protected LED
  - Utilised power level/Battery charge level
  - Status of switchable outlets
- 2 Panel for replacing batteries without interrupting the output.
- 3 1 USB port + 1 serial port + remote ON/OFF and emergency stop inputs.
- 4 EXB battery unit connector.
- 5 EXB units recognised automatically.
- 6 4 IEC 10A sockets, including 2 programmable sockets.
- 7 8 IEC 10A sockets, including 4 programmable sockets.
- 8 Communications card slot.



Evolution S 3000 RT2U Netpack

## Customer Service & Support

### 2 year guarantee, including batteries

Standard exchange of product in case of failure, including batteries.

### Associated services<sup>(1)</sup>:

Warranty+: 3 year extended guarantee.

1: Depending on the country, see [www.mgeups.com/services](http://www.mgeups.com/services).

## Communications software and hardware

### Solution-Pac software on CD-ROM with each UPS

For monitoring the server(s) powered by the UPS and for local and remote UPS supervision.

### Network Management Card (NMC) 2006

For connecting the UPS to an Ethernet 10/100 network, raising SNMP alarms and supervising the UPS using a simple browser interface.

### NMC environment sensor

Monitoring the temperature, humidity and 2 relay contacts via SNMP or HTML.

### Enterprise Power Manager supervisor

For comprehensive management of a set of UPSs using a Windows PC.

### Management-Pac 2 suite

NMS integration kit: HP OpenView, IBM Tivoli Netview, CA Unicenter, etc.

### Management Card Contacts/Serial

Add a second relay contacts or Serial port to the UPS.

### UPS Control remote display

To monitor the UPS status up to 25m from the unit.

## Technical characteristics

Model	Evolution				Evolution S				
	650	850	1150	1550	2000	1250	1750	2500	3000
Rating	650 VA 420 W	850 VA 600 W	1150 VA 770 W	1550 VA 1100 W	2000 VA 1600 W	1250 VA 1150 W	1750 VA 1600 W	2500 VA 2250 W	3000 VA 2700 W
Format	Tower or 1U Rack				RT2U (tower / rack 2U)				RT2U & RT3U
<b>Electrical characteristics</b>									
Technology	Line-Interactive High Frequency (Booster + Fader)								
Input voltage and frequency ranges without using batteries	160V-294V (adjustable to 150V-294V) 47 to 70 Hz (50 Hz system), 56.5 to 70 Hz (60 Hz system) <sup>(1)</sup>								
Output voltage and frequency	230 V (+6/-10 %) <sup>(2)</sup> , 50/60 Hz +/- 0.1 %								
<b>Connections</b>									
Input	1 IEC C14 (10 A) socket						1 IEC C20 (16 A) socket		
Outputs	4 IEC C13 (10 A)			8 IEC C13 (10 A)			8 IEC C13 (10 A) sockets IEC C19 (16 A) socket		
Remotely controlled sockets	2 groups of 1 x IEC C13 (10 A)			2 groups of 2 x IEC C13 (10 A)					
Additional outputs with HS MBP	4 FR/Schuko sockets or 3 BS sockets or 6 IEC 10A sockets or terminal blocks (HW version)								
Additional outputs with FlexPDU	8 FR/Schuko sockets or 6 BS sockets or 12 IEC 10A sockets								
<b>Batteries</b>									
Typical backup times for 50 and 70% of the VA	Evolution/Evolution S	9/6 mn	16/7 mn	14/7 mn	14/7 mn	20/14 mn	14/9 mn	17/11 mn	15/10 mn
	Evolution S + 1 EXB					105/60 mn	60/36 mn	85/55 mn	60/42 mn
	Evolution S + 4 EXB					300/200 mn	180/115 mn	290/200 mn	210/135 mn
Battery management	Automatic weekly test (period adjustable), automatic recognition of external battery units => continuous maximisation of backup time + deep discharge protection								
<b>Interfaces</b>									
Communication ports	1 USB port + 1 RS232 serial port and relay contacts <sup>(3)</sup> + 1 mini terminal block for remote ON/OFF and Remote Power Off								
Communications card slots	1 slot for NMC Minislot 2006 card (included in Netpack versions) or NMC ModBus/JBus or MC Contacts/Serial								
<b>Operating conditions, standards and approvals</b>									
Operating temperature	0 to 35°C				0 to 40°C				
Noise level	< 40dba				< 45 dBA			< 50 dBA	
Performance - Safety - EMC	IEC/EN 62040-1-1 (Safety), IEC/EN 62040-2 EN 50091-2 class B (EMC), IEC/EN 62040-3 (Performance), IEC/EN 61000-4-2, 61000-4-3, 61000-4-4; 61000-4-5, 61000-4-6, 61000-4-8 (EMI)								
Approvals	CE, CB report, TÜV								
<b>Dimensions (WxDxH) in mm / Weight in kg</b>									
Dimensions of the Tower	147*418*234			147*492*234		440*509*86,2 (2U)		440*634*86,2 (RT2U) 440*484*130,7 (RT3U)	
Dimensions of the Rack	438*366*43,2 (1U)	438*512*43,2 (1U)		438*556*43,2 (1U)					
Weight of the Tower/Rack	8,4/ 10,1	10,85/ 16,1	12,5/ 16,6	16,53/ 20	25,7	24,3	26,6	33,8	33,8 (RT2U) 34,3 (RT3U)
Dimensions of EXB						440*509*86,2 (2U)		440*484*130,7 (3U)	
Weight of the EXB						30,4		41,7	

1: Up to 40 Hz in low-sensitivity mode (programmable using Personal Solution-Pac software. 2: Adjustable to 200 V (10 % derating of output power) / 208 V / 220 V / 230 V / 240 V. 3: USB and RS232 ports cannot be used simultaneously.

## Part Numbers

Evolution	650	850	1150	1550	2000 RT2U	S 1250 RT2U	S 1750 RT2U	S 2500 RT2U Netpack*	S 3000 RT3U	S 3000 RT2U Netpack*
Tower	68450	68452	68454	68457	-	-	-	-	-	-
Rack 1U	68451	68453	68455	68458	-	-	-	-	-	-
Convertible Tower/Rack	-	-	-	-	68460	68456	68459	68463	68464	68465
EXB Models	-	-	-	-	-	68470		2U = 68 472 - 3U = 68 471		-

\* NMC card included in Netpack versions.